

JULY 2022

CIRCUITS

FOR DAKOTA ELECTRIC MEMBERS



HAVE A HAPPY
**FOURTH
OF JULY**



2

WHAT'S
NEW

4

ESTIMATE
COSTS

6

SAVE
MONEY

**DAKOTA
ELECTRIC**
ASSOCIATION
Your Touchstone Energy® Cooperative

CONTACT US

Member Service & Drive-Up Window

7 a.m. – 7 p.m. Monday – Friday
651-463-6212 or 1-800-874-3409
Minnesota Relay Service 711

Lobby - 7 a.m. - 4:30 p.m. Monday - Friday

4300 220th Street West
Farmington, MN 55024

24-Hour Outage & Emergency Service

651-463-6201 or 1-800-430-9722

Underground Cable Locations

Gopher State One Call 811 or
651-454-0002 or 1-800-252-1166
www.gopherstateonecall.org

Tree Trimming & Street Lights

651-463-6287

Dakotaelectric.com

customerservice@dakotaelectric.com

*Dakota Electric is an equal opportunity/
affirmative action employer.*

*Dakota Electric Association® and Dakota
Electric® are registered service marks of the
cooperative.*

*All programs and rebates are subject to
change without notice. Funds are limited and
available on a first-come, first-served basis.*

BOARD OF DIRECTORS

DISTRICT 1

John (Jack) DeYoe
David Jones
Gerald F. Pittman | *Treasurer*

DISTRICT 2

Bill Middlecamp | *Vice Chair*
Clay Van De Bogart | *GRE Director*
Terry Donnelly

DISTRICT 3

Kenneth H. Danner
William F. Holton | *Secretary*
Margaret D. Schreiner | *GRE Director*

DISTRICT 4

Paul Bakken | *Chair*
Judy H. Kimmes
Stacy Miller | *MREA Director*

WHAT'S NEW?

An Update On All Things Dakota Electric

Board of Directors Reorg

Paul Bakken has been appointed as the new board chair; Bill Middlecamp is now the vice chair; Jerry Pittman is the treasurer, and Bill Holton is the secretary.

Strategic Planning

Management and staff are working to achieve goals defined during the board retreat held in early May. We will provide updates as plans fully emerge, and we look forward to an exciting future.

Changes at Headquarters

Dakota Electric is upgrading its original fuel tanks along with the fuel monitoring system that detects leaks. Additionally, we are adding 12 level two EV chargers to our headquarters to accommodate more electric fleet vehicles.

Vegetation Management

Crews and contractors completed trimming on Orchard Lake Substation circuits in Lakeville, which stretches approximately 2.5 miles. Year-to-date, crews and contractors have closed out over 108 tree service tickets and completed circuit trimming on a total of 15 circuits that cover approximately 105 miles of line. This is part of a long-term initiative.

Cable Replacement

Consistent with Dakota Electric's strategic efforts to monitor failure rates and replace bare cable, which has exceeded its useful life, line crews have completed 12,000 ft. of cable replacement so far in 2022.

Cliff Road Project

To accommodate improvements being made to Cliff Road in Eagan, our existing three-phase overhead

mainline cable from Lakewood Hills Road west to Lexington Avenue was converted to mainline underground cable. Dakota Electric crews installed 19,000 feet of mainline underground cable and placed four pad-mount switch cabinets at strategic locations throughout the project.

Integrated Distribution Planning (IDP)

The IDP is an important part of planning for the electric grid of the future. In our most recent report filed with the Minnesota Public Utilities Commission, Dakota Electric studied increased electric vehicle use, additional rooftop solar installations and battery storage options. Dakota Electric's analysis showed that our distribution system is performing well and is prepared to reliably serve members and your needs for the future, including increased electric vehicles and solar energy use.

Additionally, we expect to connect over 1,200 new homes and businesses to our system in 2022.

AGi Update

We currently have 122,825 active AGi meters. With these new meters installed, we have seen improved internal efficiencies and outage detection. We are seeing decreased costs since we are now able to respond to most requests remotely instead of sending staff out to transfer or reconnect service. These are real operational savings, allowing us to decrease our reconnection fee for most residential meters.

2021 DAKOTA ELECTRIC SOLAR PERFORMANCE



Marshan

1 MW

TOTAL CAPACITY

5 ACRES

NEAR HASTINGS

1.5M

KWH PRODUCTION

***169 HOMES POWERED ANNUALLY**

Randolph

2 MW

TOTAL CAPACITY

15 ACRES

NEAR RANDOLPH

3.6M

KWH PRODUCTION

***393 HOMES POWERED ANNUALLY**



Vermillion

3 MW

TOTAL CAPACITY

15 ACRES

NEAR FARMINGTON

5.2M

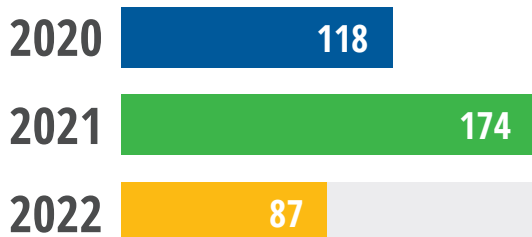
KWH PRODUCTION

***562 HOMES POWERED ANNUALLY**

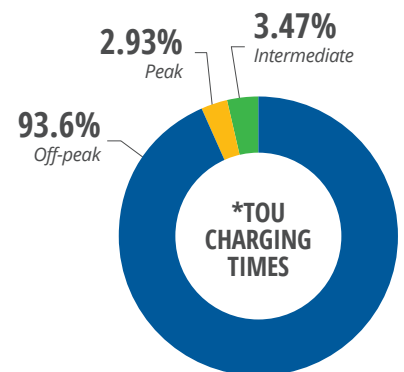
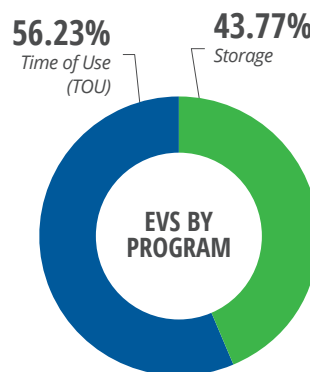
*Based on the eia.gov 2020 average monthly electricity use per residential household in Minnesota.

ELECTRIC VEHICLE UPDATE

EVs Rebated Per Year by Dakota Electric



EV Program Use



*As reported in 2022 annual EV filing.

HOW MUCH DOES IT COST?

Estimating Electricity Use & Cost

Step 1: Your electric bill is determined by the number of kilowatt-hours (kWh) used during a billing period. For 2021, the average kWh cost was 12.8¢.

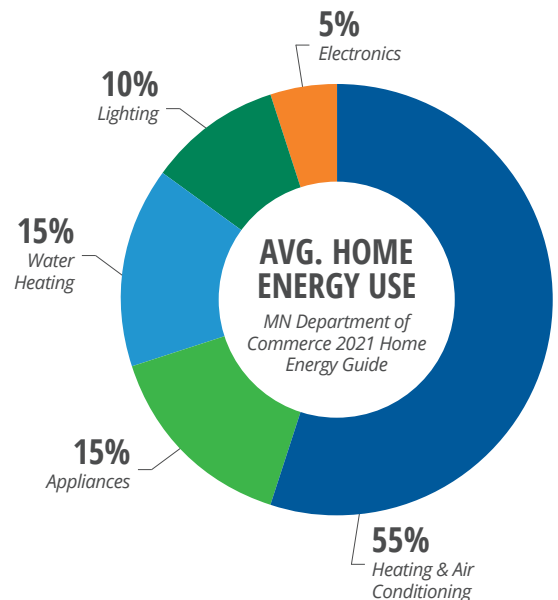
Step 2: Wattage determines electrical use per hour and can be found on the serial plate of the appliance. Electric load may also be expressed in volts and amps, rather than watts. If so, multiply volts times amperes to determine the wattage.

120 volts x 12.1 amps = 1,452 watts.

Step 3: Use the formula shown in the following example to estimate use and cost. A light uses 100 watts and is left on for 15 hours. How many kWh are used and what does it cost you?

kWh used = (100 watts x 15 hours) ÷ 1,000 watts = 1.5 kWh.

Your cost = 1.5 kWh x 12.8¢ = 19.2¢.



Electric Appliance	Typical Energy Use	Avg. Monthly Cost at 12.8¢/kWh
Refrigerator — ENERGY STAR	34 kWh/mo	\$4.35
Dishwasher	30 kWh/mo	\$3.84
Oven	45 kWh/mo	\$5.76
Chest Freezer (16.5 cubic feet) — ENERGY STAR	29 kWh/mo	\$3.71
Coffee Maker	10 kWh/mo	\$1.28
Washing Machine	8 kWh/mo	\$1.02
Dryer	83 kWh/mo	\$10.62
Furnace Fan (Automatic)	100-200 kWh/mo	\$12.80-\$25.60
Furnace Fan (Constant)	250-500 kWh/mo	\$32-\$64
*Central AC (3000 watts)	500 kWh/mo	\$64
1,500 Watt Portable Heater	280-1080 kWh/mo	\$35.84-\$138.24
Water Heater	400 kWh/mo	\$51.20
Dehumidifier	81-690 kWh/mo	\$10.37-88.32
**Plug-in Space Heater (1500 watts)	360 kWh/mo	\$46.08
Hot Tub	200-500 kWh/mo	\$25.60-\$64
Video Game System	3.4 kWh/mo	\$0.44
Cell Phone	1-3 kWh/mo	\$0.13-\$0.38
Computer	20 kWh/mo	\$2.56
Electric Vehicle	288 kWh/mo	\$36.86
Air-Source Heat Pump (ASHP)	192 kWh/mo	\$24.58

Figures are based on the average use of an appliance in good working condition. Actual use will vary based on the number of hours used and the age and condition of the equipment.

Receive electricity at a discounted rate by participating in an Energy Wise® load management program. To enroll, contact the Energy Experts® at 651-463-6243.

Visit www.dakotaelectric.com/member-services/programs-rebates for more ways to save!

Pricing is subject to change as rates increase during the summer months.

*Calculations based on average cooling hours (500) per cooling season.

**Run time of eight hours per day.

SPOT THE SCAM!

If you're ever unsure of who is contacting you, **hang up and call Dakota Electric directly** at 651-463-6212 or toll-free at 800-874-3409. Our drive-through is open 7 a.m. to 7 p.m., Monday through Friday and our lobby is open 7 a.m. to 4:30 p.m., Monday through Friday.

✓ We Will

- Help you make payment arrangements for past due accounts. If no payment agreement is reached, service may be disconnected.
- Drive a Dakota Electric vehicle, wear company clothing and carry Dakota Electric identification.
- Allow you to verify our identity. Ask to see a Dakota Electric photo ID and have the person wait outside while you call us at 651-463-6212 to verify your account status.

✗ We Won't

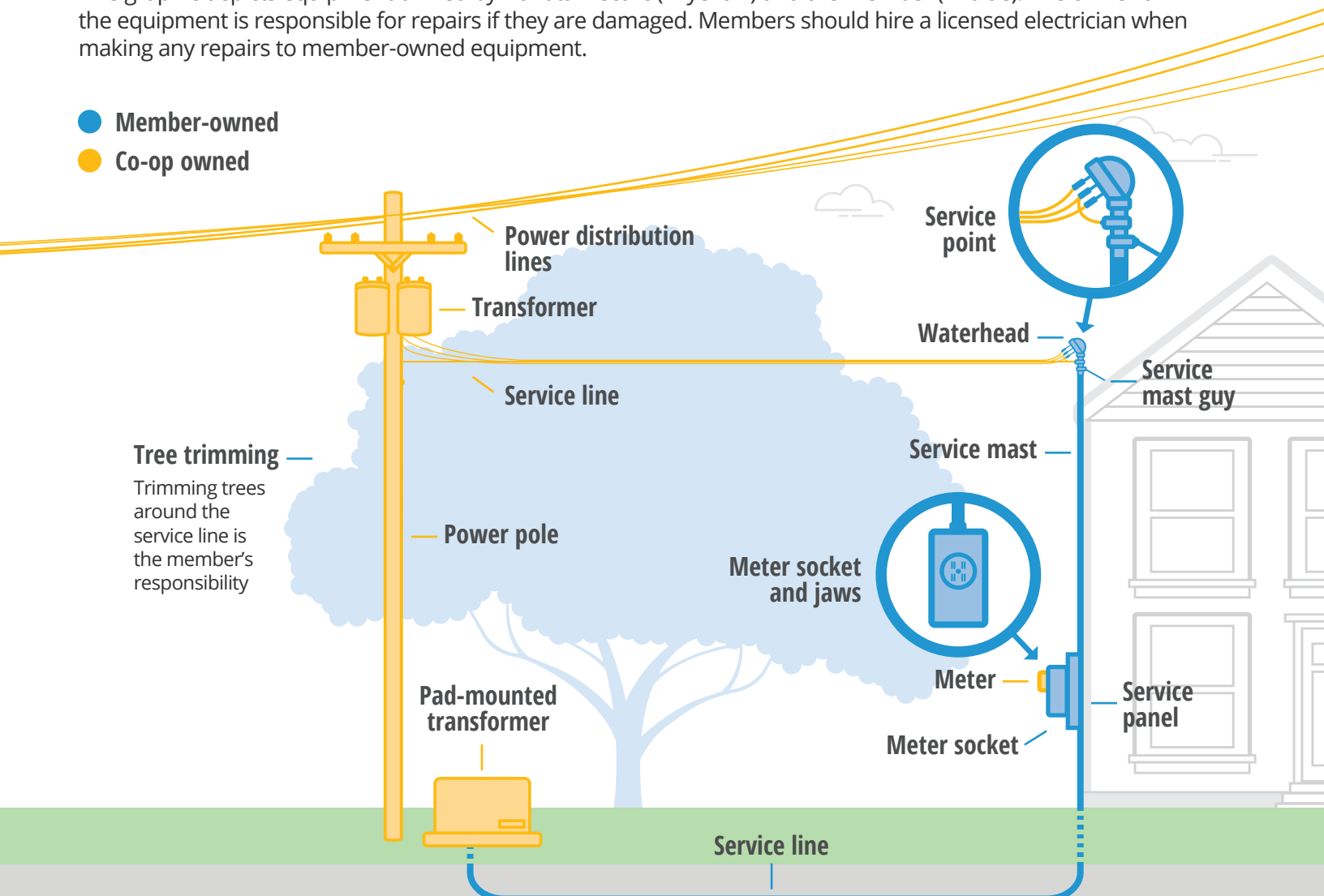
- Demand immediate payments by prepaid credit or debit cards.
- Call claiming you have overpaid your utility bill, and ask you to provide personal bank account information or a credit card number to facilitate a refund.
- Call asking for social security numbers, credit card or banking information to avoid disconnection.
- Disconnect your service outside of our office hours: 7 a.m. to 7 p.m., Monday through Friday.

WHO OWNS WHAT

Dakota Electric Owned Equipment vs. Member-Owned Equipment

This graphic depicts equipment owned by Dakota Electric (in yellow) and the member (in blue). The owner of the equipment is responsible for repairs if they are damaged. Members should hire a licensed electrician when making any repairs to member-owned equipment.

- Member-owned
- Co-op owned



SAVE ENERGY, SAVE MONEY

Rebates & Offers

Take advantage of these promotional rebates! Install a qualifying, energy-saving air-source heat pump or ductless air-source heat pump and save.



AIR-SOURCE HEAT PUMP	PROMO REBATE
≥ 8.2 HSPF	\$1,000*
≥ 9.0 HSPF	\$2,000*

**Equipment must be enrolled in an Energy Wise® off-peak rate and installed by a qualified contractor to receive the rebate.*




HURRY!
Promotion available Apr. 1 - Aug. 31




DUCTLESS/MINI SPLIT AIR-SOURCE HEAT PUMP	REGULAR REBATE	PROMO REBATE
Delivered fuels	\$300	\$450*
Electric heat	\$500	\$750*

**Minimum HSPF ≥ 9.0*

Get money back with our battery-powered yard tool rebates!



YARD TOOL	REBATE
Lawnmower	\$50
Snow blower	\$50
Chainsaw	\$25
Leaf blower	\$25
Trimmer or weed whip	\$25

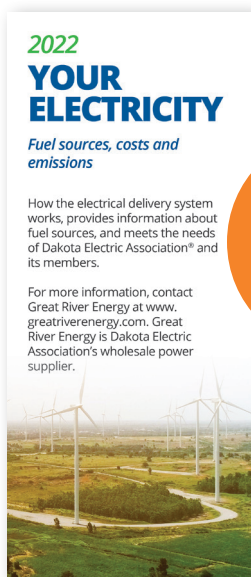


COMMUNITY

2022 Electricity Brochure Available

The most recent information on how the electric generation, transmission and distribution systems work, plus the sources, costs and emissions of fuels used in meeting the needs of Dakota Electric's members, is available by visiting www.dakotaelectric.com/member-services/member-resources.

You may also request a copy of the brochure be mailed to you by calling 651-463-6212.



NEW!

PII Member Notice Available

We understand the importance of protecting the Personally Identifiable Information (PII) provided by our members. Dakota Electric protects its members' privacy in accordance with all regulatory and legal requirements. To learn more, view our PII member notice brochure by visiting www.dakotaelectric.com/member-services/billing-payments/electric-rates-rights.

Outage App Notice

Starting July 26, 2022, Dakota Electric's outage app will no longer be supported by the vendor. While we are working on a solution, you may still report your outage online at www.dakotaelectric.com/power-outages or by phone at 651-463-6201.

Scholarships Awarded

More than 100 area high school students received scholarships this spring for their post-secondary education from Dakota Electric Association. Other students receiving part of the \$160,000 in unclaimed capital credits this year are students at Inver Hills Community College and Dakota County Technical College, who will receive their scholarships in the fall. Dakota Electric has donated over \$2 million since 1990 to help local students reach their goals through post-secondary education.

"We are pleased to be able to help our local students this way," Dakota Electric's President and CEO Greg Miller said. "As a not-for-profit electric cooperative, Dakota Electric is proud to provide these scholarships from unclaimed capital credits as an investment in the future of our local youth."

Students from the following high schools received scholarships: Apple Valley, Burnsville, Cannon Falls, Eagan, Eastview, Farmington, Hastings, Two Rivers, Lakeville North, Lakeville South, Northfield, Randolph, Red Wing, Rosemount and Simley.



Member Appreciation Event

Unfortunately, Dakota Electric is not hosting the Member Appreciation event at the Minnesota Zoo this year, due to the uncertainty COVID-19 presented at the time planning needed to take place.

We appreciate your patience and hope to see you at the event in 2023!



Your Touchstone Energy® Cooperative

4300 220th Street West
Farmington, MN 55024

UPCOMING EVENTS

- **Independence Day**
July 4, Office closed
- **Board Meeting**
July 28, 8:30 a.m.

Find board meeting agendas and
approved meeting minutes at
www.dakotaelectric.com/monthly-board-meetings.

PRSRT STD
U.S. POSTAGE
PAID
DAKOTA ELECTRIC
ASSOCIATION

CONNECT WITH US!



Check out a video of the event on our YouTube channel!

