

MAY 2022

CIRCUITS

FOR DAKOTA ELECTRIC MEMBERS

**LINEWORKER
SAFETY GEAR**

HARD HAT

**SAFETY
GLASSES**

**IT'S
ELECTRICAL
SAFETY
MONTH!**

**INSULATED
SLEEVES**

**FLAME-RESISTANT
CLOTHING**

HOT STICK

**INSULATED
GLOVES**

2-3
Electrical
Safety

EQUIPMENT BELT

**FALL
RESTRAINT
STRAPS**

5
Planting
Guidelines

6
Rebates &
Offers

**CLIMBING
HOOKS**

**STEEL TOE
WORK BOOTS**

CONTACT US

Member Service & Drive-Up Window

7 a.m. – 7 p.m. Monday – Friday
651-463-6212 or 1-800-874-3409
Minnesota Relay Service 711

Lobby - 7 a.m. - 4:30 p.m. Monday - Friday

4300 220th Street West
Farmington, MN 55024

24-Hour Outage & Emergency Service

651-463-6201 or 1-800-430-9722

Underground Cable Locations

Gopher State One Call 811 or
651-454-0002 or 1-800-252-1166
www.gopherstateonecall.org

Tree Trimming & Street Lights

651-463-6287

Dakotaelectric.com

customerservice@dakotaelectric.com

*Dakota Electric is an equal opportunity/
affirmative action employer.*

*Dakota Electric Association® and Dakota
Electric® are registered service marks of the
cooperative.*

*All programs and rebates are subject to
change without notice. Funds are limited and
available on a first-come, first-served basis.*

BOARD OF DIRECTORS

DISTRICT 1

John (Jack) DeYoe

David Jones

Gerald F. Pittman | *Chair*

DISTRICT 2

Bill Middlecamp | *Treasurer*

Clay Van De Bogart | *GRE Director*

Vacant Seat

DISTRICT 3

Kenneth H. Danner | *Secretary*

William F. Holton

Margaret D. Schreiner | *GRE Director*

DISTRICT 4

Paul Bakken | *Vice Chair*

Judy H. Kimmes

Stacy Miller | *MREA Director*

ELECTRICAL SAFETY FOR KIDS



Brandon Lunde,
Manager of Safety Services

This month, Dakota Electric would like to take a moment to reflect on the importance of electrical safety for kids.

Electricity plays a major role in our everyday lives, and it is a powerful resource that should be respected. Unfortunately, our children often do not understand the dangers of electricity. Since May is Electrical Safety Month, I'd like to review a few electrical safety tips to share with your children.

Outdoor Safety

When your kids are playing outside, have them keep a safe distance from power lines, substations and other electrical equipment. Flying kites or remote-controlled toys and climbing trees is fun, but accidentally making contact with a power line or other electrical equipment can be dangerous and, in some cases, even deadly. Below are some outdoor electrical safety tips to share with your children.

- Never fly kites or remote-controlled toys near power lines.
- Stay away from power lines, meters, transformers and electrical boxes.
- Never climb trees near power lines.
- Don't dig around electrical equipment.
- If you get something stuck in a powerline, ask an adult to call Dakota Electric.
- Never touch or go near a downed power line even if you think it is turned off.

Indoor Safety

Electrical safety in the home is important for everyone, but especially for young children who don't yet understand the potential dangers of electricity. Below are some tips to share with your children regarding indoor electrical safety.

- Do not overload electric outlets.
- Never mix water and electricity.
- Do not yank electric cords from the wall — gently pull from the plug.
- Don't touch broken or frayed (with the wire showing) cords — these cords should not be used.
- Don't bite or play with electrical cords.
- Never play with light bulbs in lamps and lights — this could cause burns, electric contact or a fire.
- Never stick fingers, toys or any other objects into electrical outlets or light sockets.
- Never put metal objects in outlets or appliances.

No matter how you choose to get your kids interested in staying safe around electricity, Dakota Electric is here to help. We offer free in-person powerline safety demonstrations to schools, police/fire/EMS and other social groups. To learn more about electrical safety, visit www.dakotaelectric.com.

SAFETY GUIDE

Avoid the Big Green Box

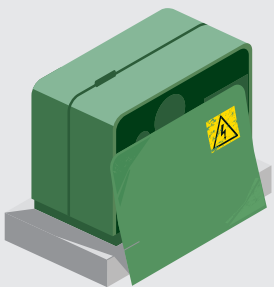
Please stay away from pad-mounted transformers (the big green box) and other pad-mounted equipment. While safe, they are not meant for touching, climbing or playing. Pad-mounted transformers carry high voltages of electricity that serve many homes in our communities.



Never climb or play on pad-mounted transformers. Do not put fingers, sticks or other objects through cracks in the transformer.

Never dig near a pad-mounted transformer. They are surrounded by underground cables. Hitting the cable could result in electrical shock or disruption of service.

Always call 811 before you dig.



If you notice anything amiss, like an unlocked transformer or one that has been damaged, please contact Dakota Electric immediately.

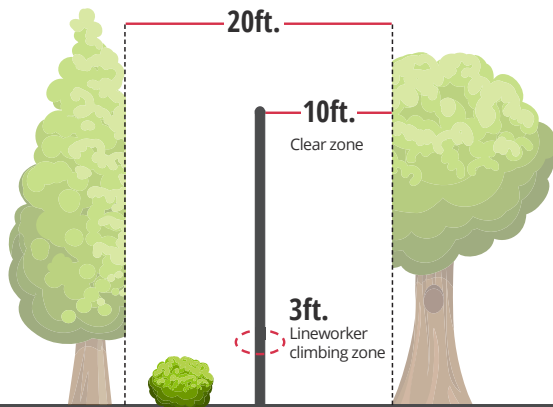
Committed To Safety

At Dakota Electric, we are committed to a culture of safety that is integral to our daily operations. Our lineworkers are required to always wear personal protective equipment when on the job. This includes special fire-resistant clothing, limiting potential injuries from burns and sparks. Insulated rubber gloves and sleeves are worn in tandem to protect from electrical shock. Our safety team regularly discusses important safety issues pertaining to work within the office as well as out in the field.

Dakota Electric's concern for safety extends beyond our employees. We care deeply about the safety of our members and encourage the public to contact us if they see a downed power line or any other type of dangerous electrical situation. We strive to provide our communities with safe, reliable and affordable electricity and to serve as your trusted energy advisor, now and well into the future.

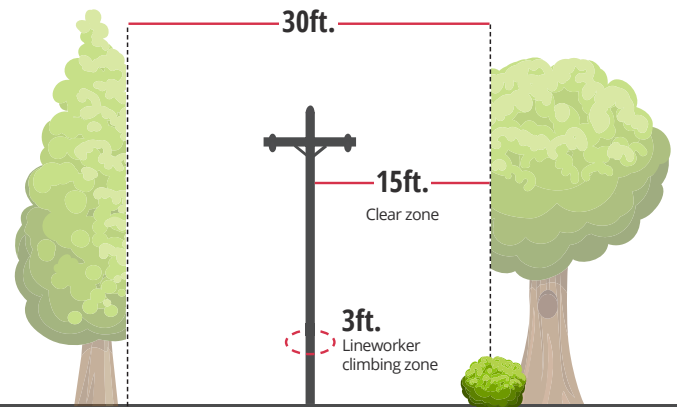
VEGETATION MANAGEMENT

Many power outages are caused by trees and limbs falling on power lines during bad weather. In 2020, Dakota Electric began a five-year vegetation management plan allowing us to spot potential issues ahead of time, perform line maintenance and provide safe and reliable electric service to our members. We maintain power line clearance by following the guidelines below. Visit www.dakotaelectric.com/trimming-and-planting for more information.



SINGLE PHASE OVERHEAD DISTRIBUTION POWER LINE

Dakota Electric strives to obtain an area of 20 feet for single phase overhead power lines or 10 feet from any open wire power line.



THREE PHASE OVERHEAD DISTRIBUTION POWER LINE

Dakota Electric strives to obtain an area of 30 feet for three phase overhead power lines or 15 feet from any open wire power line.

Dakota Electric's Vegetation Management Process

- Planned maintenance. Including tree pruning or felling.
- Reactive pruning. Trimming vegetation with a high or demonstrated risk of interference with power lines.
- Felling trees. Cutting down trees that are discovered to be at risk of falling on or otherwise threatening power lines.
- Mowing. Maintaining the ground below the distribution power lines.
- Herbicide application. Stumps cut to a height of three inches or less with an EPA-registered and -approved herbicide applied to control vegetation.

When Will Tree Crews Come To My Property?

Members are notified six-to-eight weeks before Dakota Electric begins pruning or removing trees in their area. Timing for scheduled maintenance projects depends on the size of the trimming area, workload for the crew and the weather.

If you contact tree management to report a tree in the lines affecting your service, Dakota Electric will do its best to resolve the issue as safely and efficiently as possible.

For more information, or to submit a request to tree management, visit www.dakotaelectric.com/contact-tree-management.

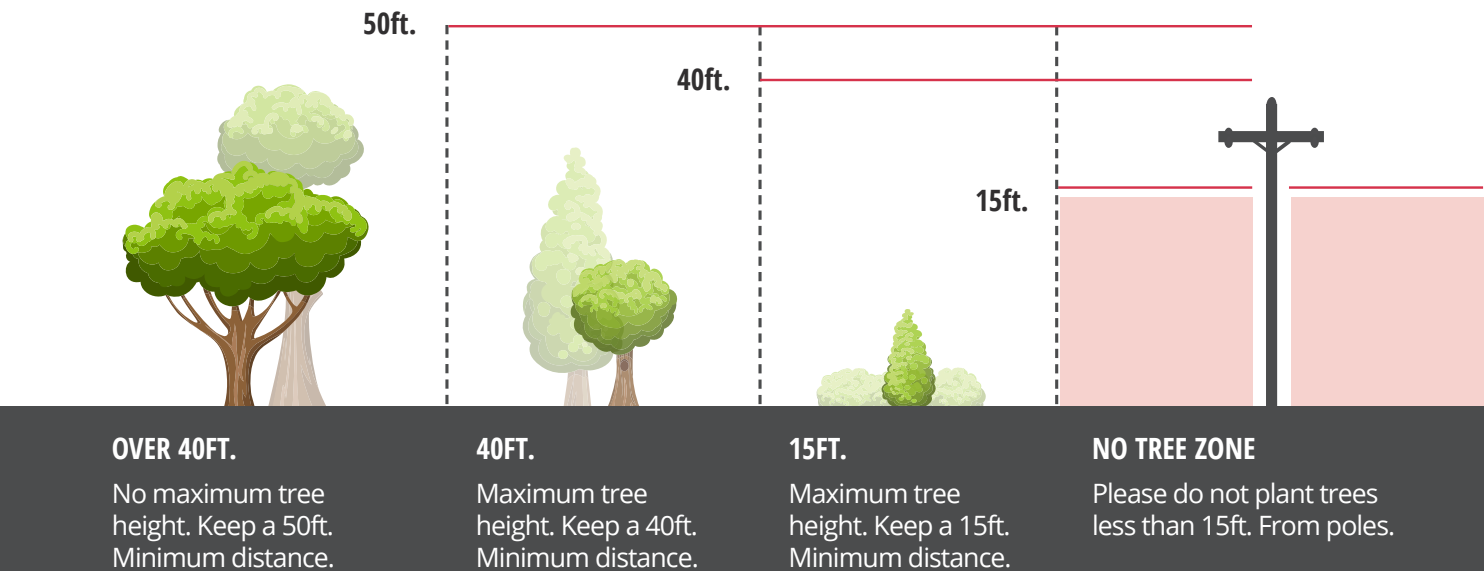
Summer Pole Inspections

Utili-Tech, a pole inspection contractor hired by Dakota Electric, is conducting annual pole inspections in Welch, Vasa, Red Wing and Webster Townships throughout July and August. The inspector will attempt to contact each member before performing inspections and might need to walk through backyards and private properties, as well as use an ATV to access certain pole locations.

Please contact Dakota Electric at 651-463-6265 if you have questions or concerns about pole inspections.

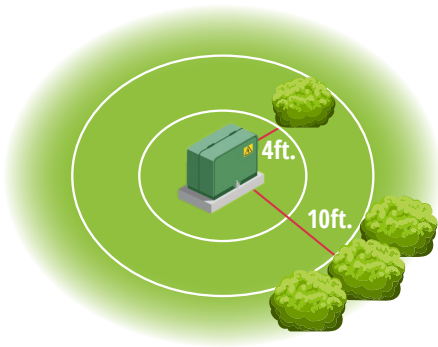
PLANTING GUIDELINES

Landscaping is a great way to increase the value of your property and save energy, but trees and shrubs planted too close to power lines and other electrical equipment can create both safety and reliability concerns. You can help maintain power line access and clearance by planning ahead before planting trees and shrubs. These guidelines help ensure a safe and reliable service for all Dakota Electric members.



Pad-Mounted Transformers

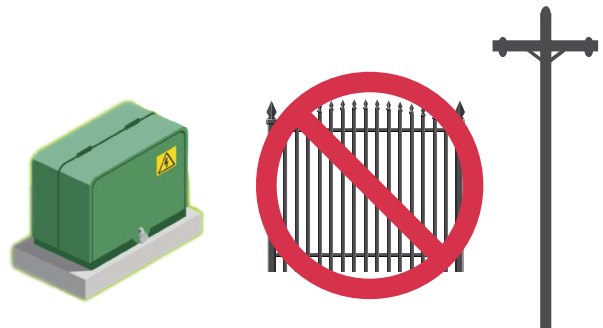
Mature trees, shrubs and plants need to maintain 10 feet of clearance in front of doors and four feet on all other sides of the box.



REMINDER!

Please do not landscape or install fences near the cooperative's pad-mounted transformers, junction boxes or at the base of power poles. Our crews need plenty of space to access this equipment.

Thank you for your cooperation!



Always call 811 or 1-800-252-1166 before you dig.

State and federal laws require marking all underground utilities before an excavation. Facility marks are valid for 14 calendar days. You can also visit www.gopherstateonecall.org to schedule online.

SAVE ENERGY, SAVE MONEY

Rebates & Offers

Take advantage of these promotional rebates! Install a qualifying, energy-saving air-source heat pump or ductless air-source heat pump and save.



AIR-SOURCE HEAT PUMP	PROMO REBATE
≥ 8.2 HSPF	\$1,000*
≥ 9.0 HSPF	\$2,000*

**Equipment must be enrolled in an Energy Wise® off-peak rate and installed by a qualified contractor to receive the rebate.*



DUCTLESS/MINI SPLIT AIR-SOURCE HEAT PUMP	REGULAR REBATE	PROMO REBATE
Delivered fuels	\$300	\$450*
Electric heat	\$500	\$750*

**Minimum HSPF ≥ 9.0*

HURRY!
Promotion available
Apr. 1 - Aug. 31



Get money back with our battery-powered yard tool rebates!



YARD TOOL	REBATE
Lawnmower	\$50
Snow blower	\$50
Chainsaw	\$25
Leaf blower	\$25
Trimmer or weed whip	\$25



REMINDER!

Many of you recently had your load control receiver upgraded. We encourage you to start your AC to make sure everything is connected properly before the summer heat hits. Call the Energy Experts® at 651-463-6243 if you have any questions.

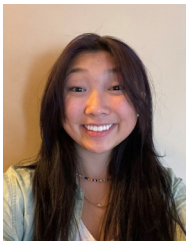
COMMUNITY

Youth Tour Winners

The National Rural Electric Cooperative Association (NRECA) Youth Tour was established to inspire our next generation of leaders. Students who participate receive an all-expenses-paid trip to Washington, D.C., to learn about the cooperative business model, meet elected officials, visit monuments and museums, tour federal agencies and discuss issues that are most important to them.

Dakota Electric has sent approximately 150 students since 1967. This commitment to our community is a fundamental part of what makes us more than your average utility.

Below are the students that Dakota Electric will be sponsoring for this year's Youth Tour.



Chloe Bechard
Eagan High School
Grade 11



Taryn Hillerud
Eagan High School
Grade 12



Madysen Leick
Eastview High School
Grade 11



Meti Negewo
Rosemount High School
Grade 11



Sarah Rauf
Lakeville North High School
Grade 12



Joan Bromberek*
Hastings High School
Grade 12

Annual Meeting & Election Results

The 2022 annual meeting reports are available to view by visiting www.dakotaelectric.com/about-us/annual-meeting-election.

This edition of Circuits was sent to print prior to the results of the annual election. Election results are posted at the link above.

Energy Assistance

For energy assistance resources visit www.dakotaelectric.com/member-services/billing-payment/financial-assistance. Contact us Monday through Friday from 7 a.m. to 7 p.m. at 651-463-6212 or 1-800-874-3409, or email customerservice@dakotaelectric.com.

Lobby Hours

Our lobby is open 7 a.m. - 4:30 p.m., Monday-Friday. Member services and the drive-up window are available from 7 a.m. - 7 p.m., Monday-Friday.

Thank You!

To our members that participated in the member satisfaction survey, we thank you! Your feedback is greatly appreciated. We look forward to using the results to help make decisions on matters important to the future of Dakota Electric.



*Alternate



Your Touchstone Energy® Cooperative

4300 220th Street West
Farmington, MN 55024

UPCOMING EVENTS

- **GreenTouch Event**
May 7, 9 a.m. - Noon
- **Ride & Drive Event**
May 24, 4-8 p.m.
- **Board Meeting**
May 26, 8:30 a.m.

Find board meeting agendas and approved meeting minutes at www.dakotaelectric.com/monthly-board-meetings.

PRSRT STD
U.S. POSTAGE
PAID
DAKOTA ELECTRIC
ASSOCIATION

CONNECT WITH US!



Tuesday, May 24
4-8 p.m.
Buck Hill, Burnsville

Test drives and static display: 4-8 p.m.
PANEL *Preparing for an EV at your home*: 5-6 p.m.
Refreshments provided.

